

FIRST COURSE

CALAMARI

LIGHTLY BREADED, MARINARA, LEMON BASIL AIÖL

SEARED AHI

SOBA NOODLE SEAWEED SALAD
GREEN TEA VINAIGRETTE

CHICKEN WINGS OR TENDERLOINS

HONEY MUSTARD, BLUE CHEESE, BUFFALO SAUCE

JUMBO LUMP CRAB CAKES

CLASSIC REMOULADE, FRISÈE

QUESADILLAS

CHICKEN & ANDOUILLE SAUSAGE
SIX CHEESES OR PRIME RIB
FRESH SALSA, SOUR CREAM, GUACAMOLE

TRUFFLE FRENCH FRIES

SERVED WITH TRUFFLE AIÖLI

OYSTERS ON THE HALF SHELL

MIGNONETTE
HALF DOZEN
FULL DOZEN

FRESH POACHED U-15 SHRIMP

COCKTAIL SAUCE

SOFT SHELL CRAB BASKET

SHOESTRING FRIES, CLASSIC REMOULADE

FRESH SOUPS & SALADS

FRENCH ONION

CHEESE GRATINÉE

NEW ENGLAND SEAFOOD CHOWDER

FROM THE KETTLE

CHEF'S DAILY CREATION

CAESAR SALAD

ROMAINE, PARMESAN, CROUTONS

SEARED SALMON OR GRILLED CHICKEN

JUMBO SCALLOPS OR SHRIMP

NEW YORK STRIP STEAK

“STARBOARD” SALAD

BIBB LETTUCE, BACON, CARROTS, CHERRY TOMATOES, PISTACHIOS

CHAMPAGNE VINAIGRETTE

RIPE TOMATO & FRESH MOZZARELLA

BABY GREENS, PROSCIUTTO HAM

SEARED SALMON SALAD

BABY SPINACH, FETA, CASHEWS, BLACKBERRIES

GREEN GODDESS DRESSING

COBB SALAD

HAM, CHICKEN, BLUE CHEESE, AVOCADO, BACON

HARD BOILED EGG, TOMATOES

ICEBERG “WEDGE”

CARROTS, BLUE CHEESE, TOMATOES

HALF POUND BURGERS

“HAND-PACKED BURGERS & HOUSE-MADE BUNS”

**-THE ULTIMATE DRY AGED
-GREAT RANGE BUFFALO
-AMERICAN KOBE**

FRENCH FRIES, FRESH FRUIT, COTTAGE CHEESE
BROWN PALACE CHIPS, COLESLAW
MIXED GREENS SALAD IN PLACE OF SIDE
PER TOPPING, ADD A FRIED EGG TO ANY BURGER

CHEDDAR, AMERICAN, SWISS, BLUE CHEESE
BUFFALO MOZZARELLA, PROVOLONE
SMOKED BACON, MUSHROOMS
JALAPENOS, CARAMELIZED ONIONS
GUACAMOLE OR SALSA

SANDWICHES

TAVERN CLUB

TURKEY, BACON, SWISS CHEESE, TOMATO
ON THICK SLICED WHITE OR WHEAT TOAST

THE REUBEN

CORNED BEEF, SWISS CHEESE
SAUERKRAUT, RUSSIAN DRESSING, LIGHT RYE

PRIME RIB SANDWICH

OPEN-FACED ON LIGHT RYE, AU JUS

MAINE LOBSTER SALAD

ON A HOUSE BAKED BRIOCHE ROLL

AHI TUNA BURGER

AVOCADO WASABI CREAM
PICKLED GINGER

ENTREES

SERVED WITH CHOICE OF TWO SIDES

SLOW ROASTED PRIME RIB

AU JUS & HORSERADISH

ROCKY MOUNTAIN TROUT

PAN SEARED WITH LEMON BUTTER

RICOTTA GNOCCHI

ASPARAGUS, TOMATO, FRESH MOZZARELLA, BASIL

NOT SERVED WITH CHOICE OF SIDES

12 OZ ANGUS NEW YORK STRIP

7 OZ ANGUS FILET MIGNON

14 OZ ANGUS RIB EYE

1 LB MAINE LOBSTER TAIL

MARKET PRICE

ALL NATURAL ROASTED CHICKEN

MUSHROOM SAUCE

MOUNTAIN MEADOWS LAMB CHOPS

MINT SAUCE

ALASKAN HALIBUT

CAVIAR CREAM, MELTED LEEKS

GRILLED ATLANTIC SALMON

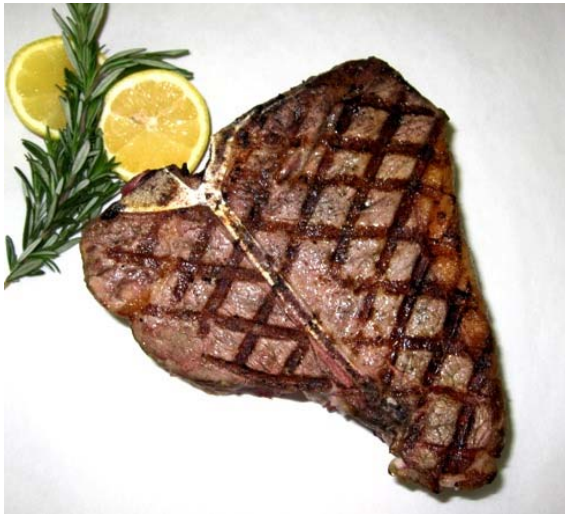
WHOLE GRAIN MUSTARD SAUCE, FINE HERBS

SEARED JUMBO SCALLOPS

SWEET CORN SAUCE WITH BACON

THE SHIP TAVERN 75'ER

75 OUNCES OF CERTIFIED BLACK
ANGUS PORTERHOUSE STEAK
CHOICE OF TWO SIDES AND STEAK SAUCES
PLEASE ALLOW 1 HOUR FOR MEDIUM RARE



SIDE BAR

ONION RINGS

GARLIC MASHED POTATOES

BAKED POTATO

FRENCH FRIES

AU GRATIN POTATOES

SAFFRON RICE PILAF

ASPARAGUS WITH HOLLANDAISE

BROCCOLI WITH HOLLANDAISE

SWEET POTATO FRIES

FRENCH GREEN BEANS

SAUTÉED BUTTON MUSHROOM

DESSERTS

TAVERN BREAD PUDDING

BOURBON WALNUT CARAMEL SAUCE
VANILLA OR CHOCOLATE ICE CREAM

VANILLA BEAN CRÈME BRÛLÉE

SIGNATURE BLACK BOTTOM PIE

BROWN PALACE MACAROONS

A TRADITION SINCE 1892

SORBET

LEMON AND RASPBERRY

VANILLA CHEESECAKE

YOUR CHOICE OF BLUEBERRY, STRAWBERRY, OR CHERRY TOPPING

GINGER STOUT CAKE

WARM GINGER SPICE CAKE SOAKED IN A GUINNESS STOUT TOFFEE SAUCE, TOPPED WITH FRESH WHIPPED CREAM AND A BRANDY TUILE

APPLE BRETON

APPLES BAKED IN A SOFT CAKE-LIKE CRUST, SERVED WARM WITH BOURBON CARAMEL AND THYME-VANILLA SAUCES
TOPPED WITH A SCOOP OF VANILLA ICE CREAM

ICE CREAM SANDWICHES

THREE FLAVORS OF COOKIES PAIRED WITH THREE FLAVORS OF ICE CREAM, SERVED WITH WARM CHOCOLATE GANACHE

COUPE DU JOUR

ICE CREAM DESSERT OF THE DAY



BROWN PALACE COFFEE & TEA CO.

**THE ORGANIC COFFEE & TEA THAT YOU ARE ENJOYING IS AVAILABLE
FOR PURCHASE IN THE COFFEE SHOP**

BY-THE-CUP

ESPRESSO OR CAPPUCINO - HOT OR ICED

CAFÉ LATTE OR CAFÉ MOCHA - HOT OR ICED

HOT CHOCOLATE LATTE

EXTRA ESPRESSO SHOT

TWININGS® TEAS - HOT OR ICED



**SAIL AWAY WITH
SOMETHING MEMORABLE**

RETAIL ITEMS

SHIP TAVERN LOGO SHOT GLASS

SHIP TAVERN LOGO PINT GLASS

SHIP TAVERN LOGO MUG

**SHIP TAVERN HOT SAUCE
GARLIC & SERRANO**